

Introduction to the SPF-PFS Strategic Plan Map

Ohio's SPF-PFS Initiative:
On-Demand Learning Event

Presented by
Ohio's SPF-PFS Evaluation Team (OSET)



STRATEGIC PREVENTION FRAMEWORK PARTNERSHIPS FOR SUCCESS (SPF-PFS)

About this learning event...



Dr. Holly Raffle
Collective Impact Training, Technical Assistance,
and Evaluation Team
Ohio University's Voinovich School of Leadership
and Public Affairs

Learning Objectives:

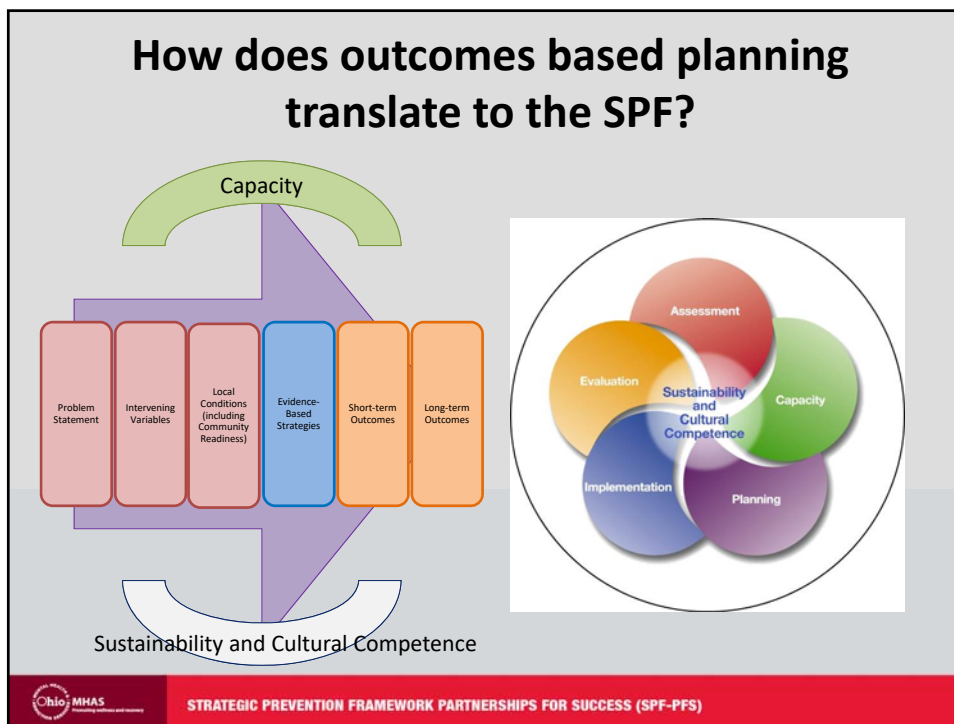
1. Construct a data-driven theory of change with the following components: (a) problem statement, (b) intervening variable, (c) strategy, (d) short-term outcome, (e) long-term outcome.
2. Summarize how to select evidence-based prevention strategies to implement based on a data-driven community logic model (theory of change).
3. Construct and map logic chains onto the SPF-PFS strategic plan map.
4. Differentiate between a theory of change and a theory of action.
5. Summarize the following components of a theory of action: capacity, timeline, and outputs.
6. Utilize Ohio's SPF-PFS Strategic Plan Map and Strategy Proposal Forms.



STRATEGIC PREVENTION FRAMEWORK PARTNERSHIPS FOR SUCCESS (SPF-PFS)

Suggested Citation:

Raffle, H. (2018, April). *Introduction to the SPF-PFS Strategic Plan Map*. Athens, OH: Voinovich School of Leadership and Public Affairs at Ohio University.



What is a logic model?

Ohio MHAS
STRATEGIC PREVENTION FRAMEWORK PARTNERSHIPS FOR SUCCESS (SPF-PFS)

Suggested Citation:

Raffle, H. (2018, April). *Introduction to the SPF-PFS Strategic Plan Map*. Athens, OH: Voinovich School of Leadership and Public Affairs at Ohio University.

Theory of Change

If we do _____ [strategies],
we expect to get _____ [outcomes].



STRATEGIC PREVENTION FRAMEWORK PARTNERSHIPS FOR SUCCESS (SPF-PFS)

What is a strategic plan?



STRATEGIC PREVENTION FRAMEWORK PARTNERSHIPS FOR SUCCESS (SPF-PFS)

Suggested Citation:

Raffle, H. (2018, April). *Introduction to the SPF-PFS Strategic Plan Map*. Athens, OH: Voinovich School of Leadership and Public Affairs at Ohio University.

Theory of Action

How are we going to accomplish what we set out to do?

1. Capacity / Inputs / Resources (Time, Money, Personnel)
2. Activities Associated with Executing Strategies
3. Outputs (Milestones)



STRATEGIC PREVENTION FRAMEWORK PARTNERSHIPS FOR SUCCESS (SPF-PFS)

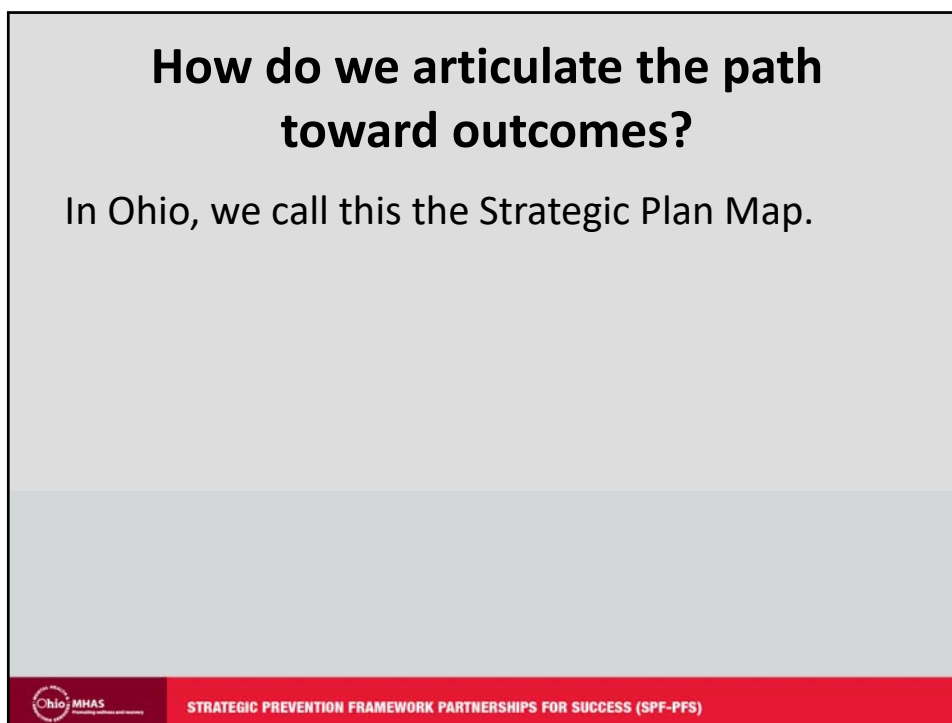
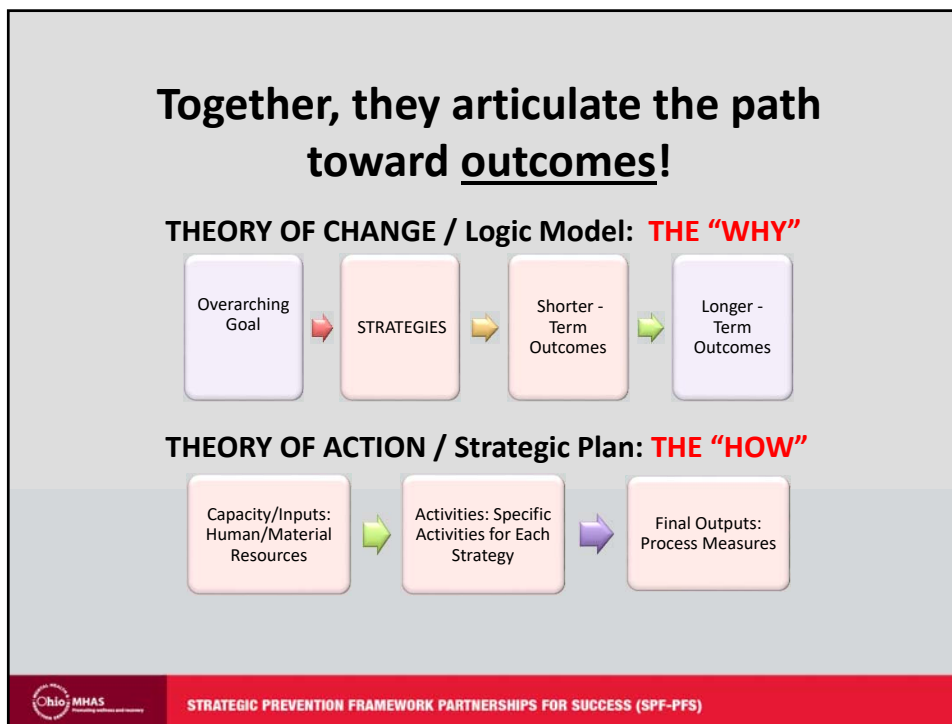
How do a logic model and strategic plan work together?



STRATEGIC PREVENTION FRAMEWORK PARTNERSHIPS FOR SUCCESS (SPF-PFS)

Suggested Citation:

Raffle, H. (2018, April). *Introduction to the SPF-PFS Strategic Plan Map*. Athens, OH: Voinovich School of Leadership and Public Affairs at Ohio University.



Suggested Citation:

Raffle, H. (2018, April). *Introduction to the SPF-PFS Strategic Plan Map*. Athens, OH: Voinovich School of Leadership and Public Affairs at Ohio University.

Insert SPF-PFS Coalition Name Here
SPF-PFS Strategic Plan Map: Insert County Here

Population of Focus:
 Briefly describe the demographics of the population of focus for this strategic plan.

Statement of the Community's Readiness to Address the Problem of Practice:
 Write 3-5 sentences here.

Theory of Community Change:
 Insert "I" Then Proposition(s) here.
 This box will summarize your theory of change and your outcomes to words.

Community Logic Model - Theory of Change		Theory of Action			Measurable Outcomes			
Problem of Practice	Intervening Variable (There may be ONLY one intervening variable per page)	Local Conditions (There may be MORE than one local condition listed)	Evidence-Based Strategy(ies)	Democratizing Capacity Inputs: Human / Material Resources	Time Line	Expected Outcomes for the Local Conditions (Shorter term Outcomes)	Outcomes for the Intervening Variable (Mid term Outcome)	Problem of Practice Outcome (Longer term Outcome)
Description of Problem of Practice (in Words)	Description of Intervening Variable (in Words) The intervening variable must be directly related to the problem of practice.	Description of Local Conditions (in Words) The local conditions must be directly related to the intervening variable.	Strategy #1: Briefly describe the evidence-informed strategy the coalition has selected (address the local conditions). There should be 2-3 correspondence between the local conditions and the strategy. CAP Type: Insert the type of strategy selected (Education, Environmental, Alternative Activity, Community-based Process, Information Dissemination)	Budget for Strategy #1: SPF-PFS Budget: 5% Percentage of Total SPF-PFS Budget: 10% In-Kind: \$ Total Budget: \$	Timeline for Strategy #1: What are the key things that have to happen to get the strategy completed? What is your timeline? DATE: Activity DATE: Activity etc.	This column should have 1:1 correspondence with the local conditions. Note: Conditions are not expected to measure the local conditions. However, it is important to show how the selected strategy will influence the local conditions which will then in turn impact the intervening variable.	This column should have 1:1 correspondence with the intervening variable + as measured by _____. The intervening variable should directly impact the problem of practice.	This column should focus on the outcome expected for the Problem of Practice: Reduce Underage Drinking Among Persons Aged 12-20 for* Reduce Rx Drug Misuse/Abuse Among Persons Aged 12-20+ as measured by _____
Data to Support the Problem of Practice: Please include the source of the data and the year(s) the data was collected.	Data to Support the Intervening Variable: Please include the source of the data and the year(s) the data was collected.	Data to Support the Local Conditions: Note: This will be qualitative data from your community's advisory. Please include the source of the data and the year(s) the data was collected.	Strategy #2: Briefly describe the evidence-informed strategy the coalition has selected to address the local conditions. There should be 2-3 correspondence between the local conditions and the strategy. CAP Type: Insert the type of strategy selected (Education, Environmental, Alternative Activity, Community-based Process, Information Dissemination)	Budget for Strategy #2: SPF-PFS Budget: 5% Percentage of Total SPF-PFS Budget: 10% In-Kind: \$ Total Budget: \$	Timeline for Strategy #2: What are the key things that have to happen to get the strategy completed? What is your timeline? DATE: Activity DATE: Activity etc.			

Please be concise. You may not use more than one 11x17 page!

How do we complete the Strategic Plan Map?

1. Articulate the logic chain
2. Select a strategy
3. Complete a strategy proposal form
4. Transfer the information onto Ohio's SPF-PFS Strategic Plan Map

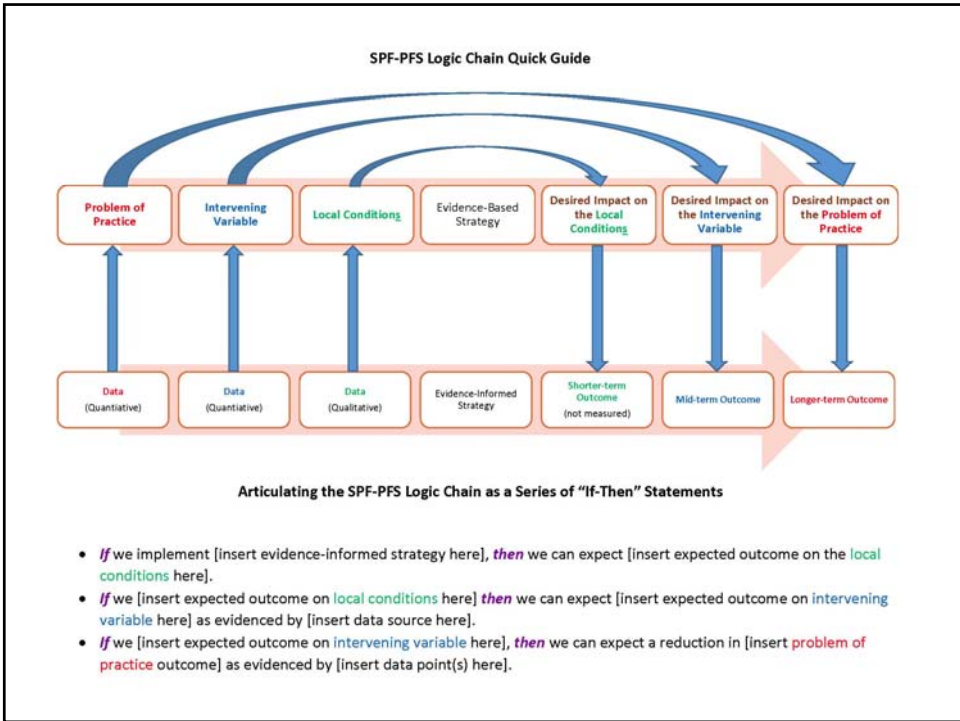


STRATEGIC PREVENTION FRAMEWORK PARTNERSHIPS FOR SUCCESS (SPF-PFS)

Suggested Citation:
 Raffle, H. (2018, April). *Introduction to the SPF-PFS Strategic Plan Map*. Athens, OH: Voinovich School of Leadership and Public Affairs at Ohio University.


Step 1: Articulate The Logic Chain

STRATEGIC PREVENTION FRAMEWORK PARTNERSHIPS FOR SUCCESS (SPF-PFS)



Suggested Citation:
 Raffle, H. (2018, April). *Introduction to the SPF-PFS Strategic Plan Map*. Athens, OH: Voinovich School of Leadership and Public Affairs at Ohio University.

We have been preparing you for this!



STRATEGIC PREVENTION FRAMEWORK PARTNERSHIPS FOR SUCCESS (SPF-PFS)

Listening Session Worksheet


Evaluation Name: XCOE County
Ohio SPF-PFS Focus Group Data Analysis Worksheet: Family Communication around Alcohol Use
Priority Substance: Underage Drinking

Pick One

Problem Statement: Fill out for each Problem
Insert Problem Statement Here

Priority Population: Both can come from Problem of Practice Report
Insert Priority Population Here

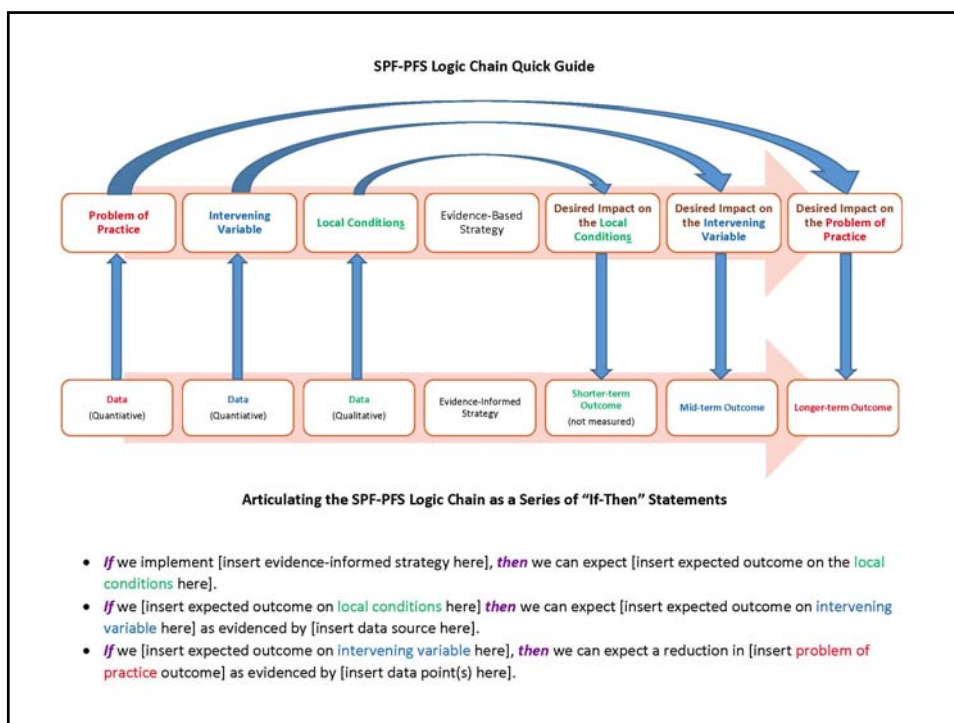
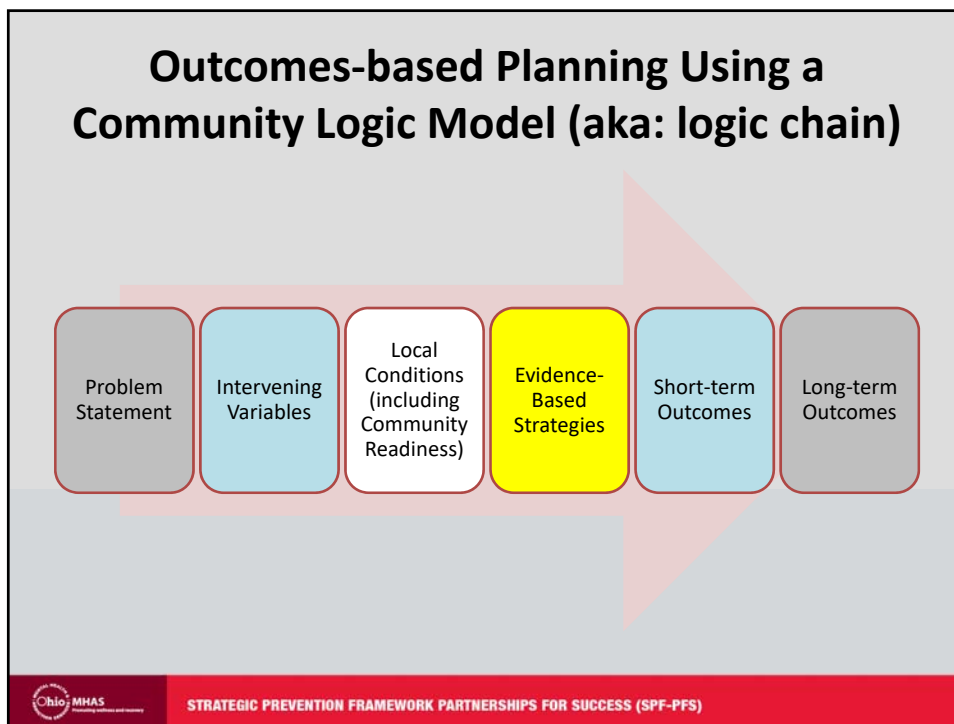
Outcome Variable(s)	Construct	Quantitative Measure (COMs)	Root Cause /Local Context	Strategies
<p>Enter the COMs consumption data (e.g., 30-day use) from your problem of practice here.</p> <p>You can pull this from your COMs data</p>	<p>Quantitative Measure (COMs): Family Communication Around Drug Use</p> <p>During the past 12 months, have you talked with at least one of your parents about the dangers of tobacco, alcohol, or drug use? By parents, we mean your biological parents, adoptive parents, stepparents, or adult guardians, whether or not they live with you.</p> <p>Qualitative Measure (Root Cause/Local Context): What is the tone, demeanor, and perceived effectiveness of family conversations around underage drinking? How can these conversations be made more meaningful and impactful for youth?</p> <p>There's a sheet for each IV and each guiding question</p>	<ul style="list-style-type: none"> Enter Family Communication around underage drinking Data Here Be sure to include data source and year. <p>Your COMs data will also help inform your strategies, if not the report of your listening sessions</p>	<ul style="list-style-type: none"> Enter theories from focus groups related to family communication around underage drinking here. Be sure to include data source (i.e., youth focus group or adult focus group) with each theory. <p>Your theories and categories fill in this space</p>	<p>Do not complete this now! This is a reminder that there has to be a connection between the problem statement, the IV, the root cause/local context, and the strategy.</p>



STRATEGIC PREVENTION FRAMEWORK PARTNERSHIPS FOR SUCCESS (SPF-PFS)

Suggested Citation:

Raffle, H. (2018, April). *Introduction to the SPF-PFS Strategic Plan Map*. Athens, OH: Voinovich School of Leadership and Public Affairs at Ohio University.



Suggested Citation:

Raffle, H. (2018, April). *Introduction to the SPF-PFS Strategic Plan Map*. Athens, OH: Voinovich School of Leadership and Public Affairs at Ohio University.

_____ County: Logic Chain

Community Coalition Name Here						
Population of Focus: _____						
Problem of Practice	Intervening Variable	Local Condition(s)	E-B Strategy	Desired Impact on Local Conditions	Desired Impact on Intervening Variable	Desired Impact on Problem of Practice
PoP Data	Intervening Variable Data	Local Condition(s) Data	E-B Strategy	Not Measured	Mid-term Outcome	Outcome

Remember, use WORDS to fill in the boxes. Just as we discussed at the April Face-to-Face, each box should be written in narrative form so everyone can understand. The boxes will expand as you type!



STRATEGIC PREVENTION FRAMEWORK PARTNERSHIPS FOR SUCCESS (SPF-PFS)

Notes on the Logic Chain Worksheet

- This is an “intermediary” step ... a worksheet ... a way to “show and share” your coalition’s work.
- This is an integral part of the strategic plan process, but you will not turn this in to the EBP.
- The template can be found on the SPF-PFS website.



STRATEGIC PREVENTION FRAMEWORK PARTNERSHIPS FOR SUCCESS (SPF-PFS)

Suggested Citation:

Raffle, H. (2018, April). *Introduction to the SPF-PFS Strategic Plan Map*. Athens, OH: Voinovich School of Leadership and Public Affairs at Ohio University.

Step 2: Select a Strategy



STRATEGIC PREVENTION FRAMEWORK PARTNERSHIPS FOR SUCCESS (SPF-PFS)

EBP Workgroup Position Statement on CSAP Strategies

The EBP workgroup requires that all SPF-PFS funded communities implement a strategic plan that includes at least **two** of the CSAP prevention strategies with one of them being **Community Based Process**. The other strategies for selection include **Prevention Education** or **Environmental**. When selecting strategies, communities must consider the diversity of their priority population and ways to reduce participation and service disparities.

Community-Based Process

The EBP Workgroup requires that all SPF-PFS funded communities implement a strategic plan using the CSAP prevention strategy **Community-Based Process**. SPF-PFS funded communities are encouraged to develop a plan to ensure that community based work sustains in their community beyond the life cycle of the grant. A strong community based coalition is essential for successful implementation, long-term sustainability and community support for prevention.

Prevention Education or Environmental

In addition to the **Community-Based Process** strategy, all SPF-PFS funded communities are required to implement at least **one** of the following CSAP strategies: **Prevention Education** or **Environmental**.

Additional Guidelines:

Please note for each selected strategy, all SPF-PFS funded communities **must also submit a plan** for **Problem Identification and Referral** for participants engaged in the strategy. It is expected that the plan for **Problem Identification and Referral** will have **no** associated expenses. While SPF-PFS funded communities may not intentionally select this strategy for implementation, the development of a plan is essential to ensure a warm handoff of participants in need of more services which is outside of the scope of the practice of prevention professionals.

SPF-PFS funded communities are encouraged to additionally consider the CSAP strategies **Information Dissemination** and **Alternative Activities** as a part of their comprehensive strategic plan however SPF-PFS funds may **not** be used to support these strategies. Communities should seek opportunities for in-kind and/or match funds to support these strategies.

Suggested Citation:

Raffle, H. (2018, April). *Introduction to the SPF-PFS Strategic Plan Map*. Athens, OH: Voinovich School of Leadership and Public Affairs at Ohio University.

Required Element #1

Community-based Process

- ON HOLD for now.
- The EBP Workgroup is requiring that nurturing your coalition be a strategy (this addresses **sustainability** and is good news).
- You will be required to expend funds on coalition maintenance and development.
- More information on this strategy to come!



STRATEGIC PREVENTION FRAMEWORK PARTNERSHIPS FOR SUCCESS (SPF-PFS)

Required Element #2

Prevention Education and/or Environmental

- Strategic Plan must include one of these two strategies.
- This is consistent with the OhioMHAS Prevention Taxonomy.
- Must be addressed with initial submission to the EBP Workgroup.



STRATEGIC PREVENTION FRAMEWORK PARTNERSHIPS FOR SUCCESS (SPF-PFS)

Suggested Citation:

Raffle, H. (2018, April). *Introduction to the SPF-PFS Strategic Plan Map*. Athens, OH: Voinovich School of Leadership and Public Affairs at Ohio University.

Required Element #3

Cultural Competence

- When selecting strategies, communities must consider the diversity of their priority population and ways to reduce participation and service disparities.
- Must be addressed with initial submission to the EBP Workgroup.



STRATEGIC PREVENTION FRAMEWORK PARTNERSHIPS FOR SUCCESS (SPF-PFS)

Required Element #4

Problem ID & Referral

- Please note for each selected strategy, all SPF-PFS funded communities **must also submit a plan** for **Problem Identification and Referral** for participants engaged in the strategy.
- It is expected that the plan for **Problem Identification and Referral** will have **no** associated expenses.
- While SPF-PFS funded communities may not intentionally select this strategy for implementation, the development of a plan is essential to ensure a warm handoff of participants in need of more services which is outside of the scope of the practice of prevention professionals.



STRATEGIC PREVENTION FRAMEWORK PARTNERSHIPS FOR SUCCESS (SPF-PFS)

Suggested Citation:

Raffle, H. (2018, April). *Introduction to the SPF-PFS Strategic Plan Map*. Athens, OH: Voinovich School of Leadership and Public Affairs at Ohio University.

Required Element #5

- SPF-PFS funded communities are encouraged to additionally consider the CSAP strategies **Information Dissemination** and **Alternative Activities** as a part of their comprehensive strategic plan however SPF-PFS funds may **not** be used to support these strategies.
- Communities should seek opportunities for in-kind and/or match funds to support these strategies.



STRATEGIC PREVENTION FRAMEWORK PARTNERSHIPS FOR SUCCESS (SPF-PFS)

Step 3: Complete A Strategy Proposal Form

- Your coalition will submit one form for **each** strategy.
- The strategy proposal form has **two** parts:
 - Part A: General Information (Must complete for each strategy!)
 - Part B: Strategy Specific (By CSAP Strategy – must complete the *appropriate* form.)
- Forms are available on the SPF-PFS Website.
- Coalitions will submit Strategy Proposal Forms to the EBP with the Strategic Plan Map.

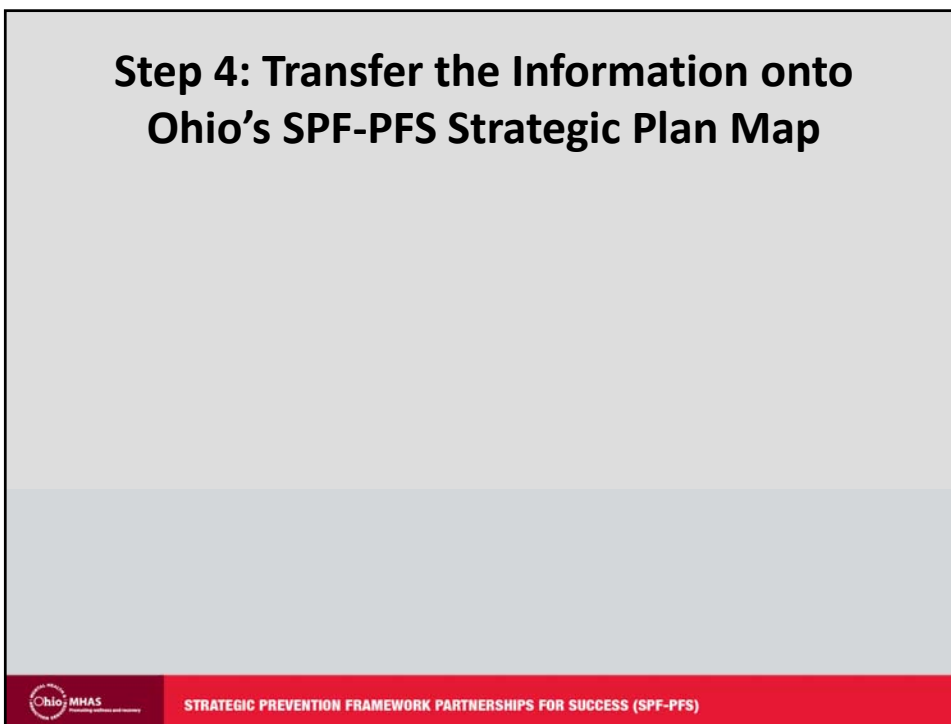


STRATEGIC PREVENTION FRAMEWORK PARTNERSHIPS FOR SUCCESS (SPF-PFS)

Suggested Citation:

Raffle, H. (2018, April). *Introduction to the SPF-PFS Strategic Plan Map*. Athens, OH: Voinovich School of Leadership and Public Affairs at Ohio University.

Step 4: Transfer the Information onto Ohio's SPF-PFS Strategic Plan Map



Insert SPF-PFS Coalition Name Here
SPF-PFS Strategic Plan Map: Insert County Here

Population of Focus:
 Briefly describe the demographics of the population of focus for this strategic plan.

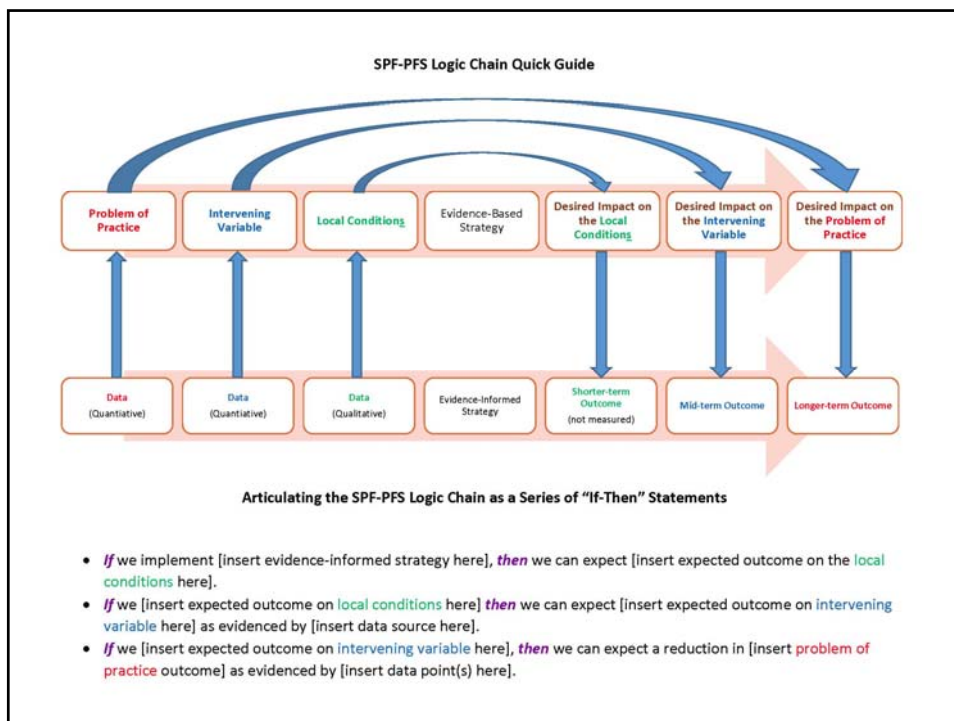
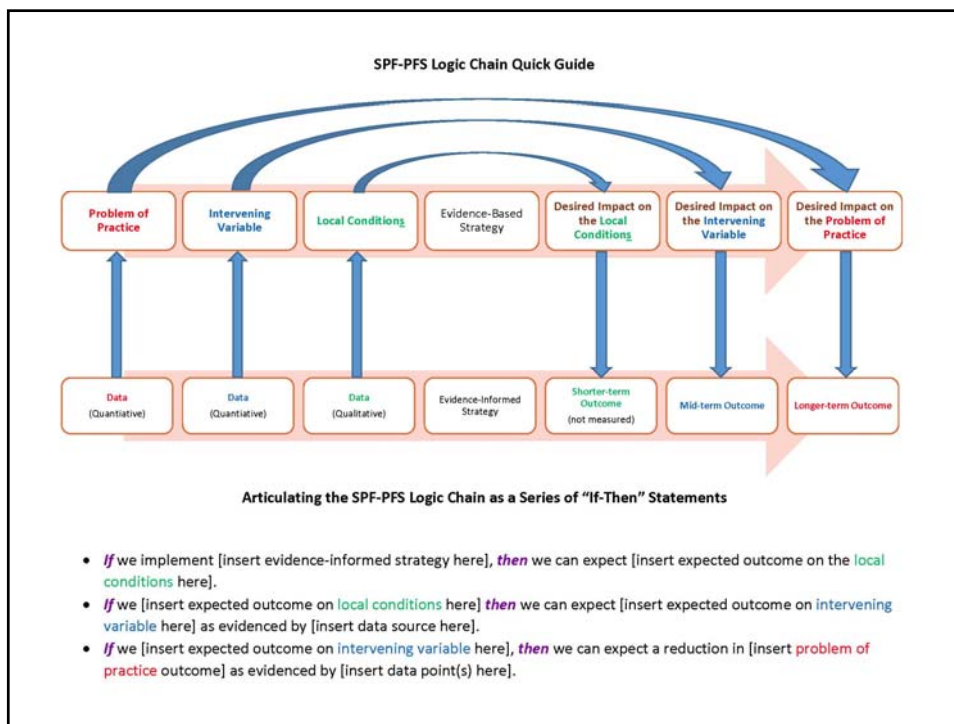
Statement of the Community's Readiness to Address the Problem of Practice:
 Write 3-5 sentences here.

Theory of Community Change:
 Insert "If...Then Propositions" here.
 This box will summarize your theory of change and your outcomes in words.

Community Logic Model - Theory of Change		Theory of Action			Measurable Outcomes			
Problem of Practice	Intervening Variable (There may be ONLY one intervening variable per page)	Local Conditions (There may be MORE than one local condition listed)	Evidence-Based Strategy(ies)	Demonstrating Capacity (Include Human/ Material Resources)	Time Line	Expected Outcomes for the Local Conditions (Shorter term Outcomes)	Outcome for the Intervening Variable (Mid term Outcome)	Problem of Practice Outcome (Longer term Outcome)
Description of Problem of Practice (in Words) Data to Support the Problem of Practice: Please include the source of the data and the year(s) the data was collected.	Description of Intervening Variable (in Words) The intervening variable must be directly related to the problem of practice. Data to Support the Intervening Variable: Please include the source of the data and the year(s) the data was collected.	Description of Local Conditions (in Words) The local conditions must be already related to the intervening variable. Note: This will be qualitative data from your community's listening session. Please include the source of the data and the year(s) the data was collected.	Strategy #1 Briefly describe the evidence-informed strategy the coalition has selected to address the local conditions. There should be 1:1 correspondence between the local conditions and the strategy. COAP Type: Insert the type of strategy selected (Education, Environmental, Alternative Activity, Community-based Practice, Information Dissemination) Strategy #2 Briefly describe the evidence-informed strategy the coalition has selected to address the local conditions. There should be 1:1 correspondence between the local conditions and the strategy. COAP Type: Insert the type of strategy selected (Education, Environmental, Alternative Activity, Community-based Practice, Information Dissemination)	Budget for Strategy #1: SPF-PFS Budget: \$ Percentage of Total SPF-PFS Budget: XX% In-kind: \$ Total Budget: \$	Timeline for Strategy #1: What are the key things that have to happen to get the strategy complete? What is your timeline? DATE: Activity etc.	This column should have 1:1 correspondence with the local conditions. Note: Coalitions are not expected to measure the local conditions. However, it is important to show how the selected strategy will influence the local conditions which will then in turn impact the intervening variable.	This column should have 1:1 correspondence with the intervening variable - as measured by _____. The intervening variable should directly impact the problem of practice.	This column should focus on the outcome expected for the Problem of Practice: Reduce Underage Drinking Among Persons Aged 12-20 Year* Reduce Rx Drug Misuse/Abuse Among Persons Aged 12-25 + as measured by _____.

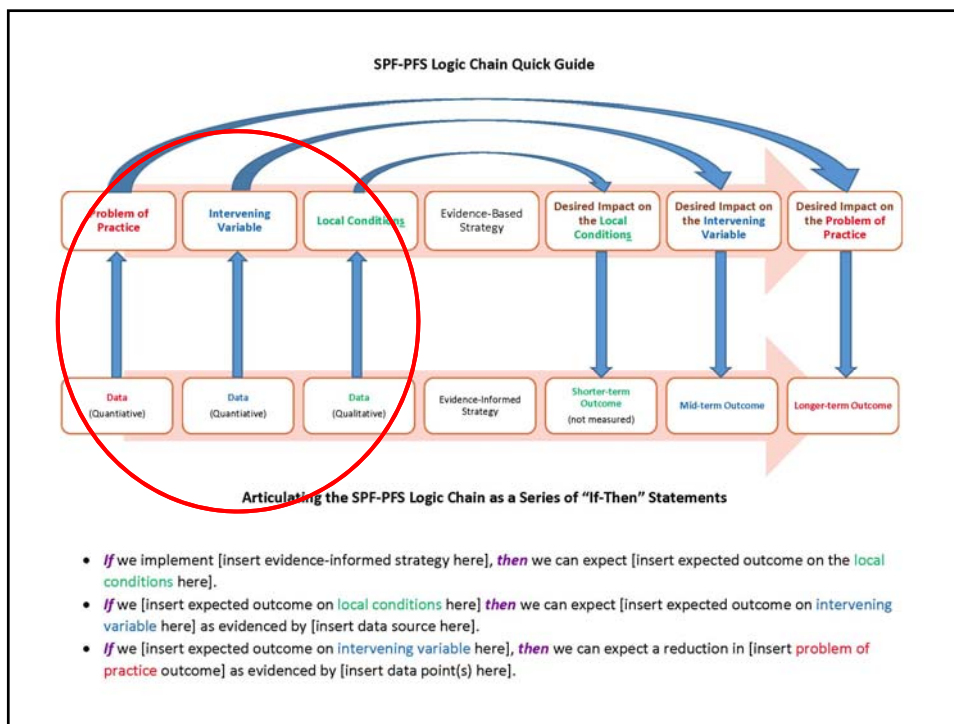
Please be concise. You may not use more than one 11x17 page!

Suggested Citation:
 Raffle, H. (2018, April). *Introduction to the SPF-PFS Strategic Plan Map*. Athens, OH: Voinovich School of Leadership and Public Affairs at Ohio University.



Suggested Citation:

Raffle, H. (2018, April). *Introduction to the SPF-PFS Strategic Plan Map*. Athens, OH: Voinovich School of Leadership and Public Affairs at Ohio University.



Insert SPF-PFS Coalition Name Here
SPF-PFS Strategic Plan Map: Insert County Here

Population of Focus:
 Briefly describe the demographics of the population of focus for this strategic plan.

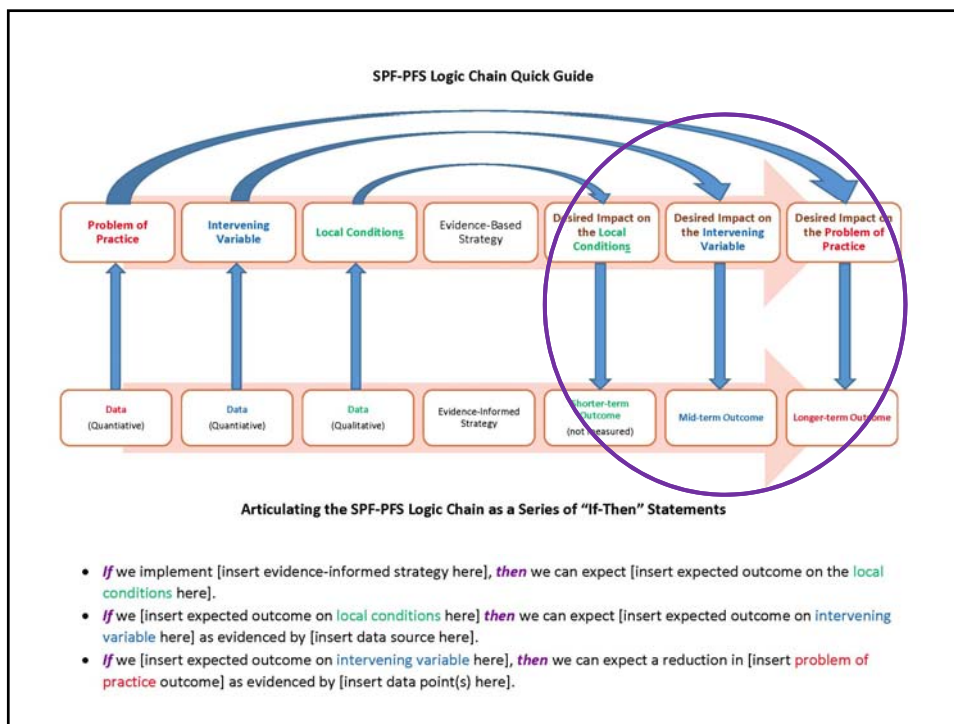
Statement of the Community's Readiness to Address the Problem of Practice:
 Write 1-3 sentences here.

Theory of Community Change:
 Insert "If-Then-Proposition(s)" here.
 This box will summarize your theory of change and your outcomes in words.

Community Logic Model - Theory of Change			Theory of Action			Measurable Outcomes		
Problem of Practice	Intervening Variable	Local Conditions	Evidence-Based Strategy(ies)	Demonstrating Capacity	Time Line	Expected Outcomes for the Local Conditions (Shorter-term Outcomes)	Outcomes for the Intervening Variable (Mid-term Outcomes)	Problems of Practice Outcome (Longer-term Outcomes)
Description of Problem of Practice (in Words) Description of Problem of Practice (in Words) The intervening variable must be directly related to the problem of practice.	Description of Intervening Variable (in Words) Description of Intervening Variable (in Words) The local conditions are already related to the intervening variable.	Description of Local Conditions (in Words) Description of Local Conditions (in Words) The local conditions are already related to the intervening variable.	Strategy #1: Briefly describe the evidence-informed strategy the coalition has selected to address the local conditions. There should be 1:1 correspondence between the local conditions and the strategy. CSAP Type: Insert the type of strategy selected (Education, Environmental, Alternative Activity, Community-based Program, Information Dissemination).	Budget for Strategy #1: SPF-PFS Budget: \$ Percentage of Total SPF-PFS Budget: 10% In-Kind: \$ Total Budget: \$	Timeline for Strategy #1: What are the key things that have to happen to get the strategy complete? What is your timeline? DATE: Activity DATE: Activity etc.	This column should have 1:1 correspondence with the local conditions. Note: Conditions are not expected to measure the final conditions. However, it is important to show how the selected strategy will influence the local conditions which will then in turn impact the intervening variable.	This column should have 1:1 correspondence with the intervening variable - as measured by _____. The intervening variable should directly impact the problem of practice.	This column should focus on the outcome expected for the Problem of Practice: Reduce Underage Drinking Among Persons Aged 12-20 Year, Reduce Rx Drug Misuse/Abuse Among Persons Aged 12-25 + as measured by _____.
Data to Support the Problem of Practice: Please include the source of the data and the year(s) the data was collected.	Data to Support the Intervening Variable: Please include the source of the data and the year(s) the data was collected.	Data to Support the Local Conditions: This will be qualitative data from a community's listening session. Please include the source of the data and the year(s) the data was collected.	Strategy #2: Briefly describe the evidence-informed strategy the coalition has selected to address the local conditions. There should be 1:1 correspondence between the local conditions and the strategy. CSAP Type: Insert the type of strategy selected (Education, Environmental, Alternative Activity, Community-based Program, Information Dissemination).	Budget for Strategy #2: SPF-PFS Budget: \$ Percentage of Total SPF-PFS Budget: 10% In-Kind: \$ Total Budget: \$	Timeline for Strategy #2: What are the key things that have to happen to get the strategy complete? What is your timeline? DATE: Activity DATE: Activity etc.			

Please be concise. You may not use more than one 11x17 page!

Suggested Citation:
 Raffle, H. (2018, April). *Introduction to the SPF-PFS Strategic Plan Map*. Athens, OH: Voinovich School of Leadership and Public Affairs at Ohio University.



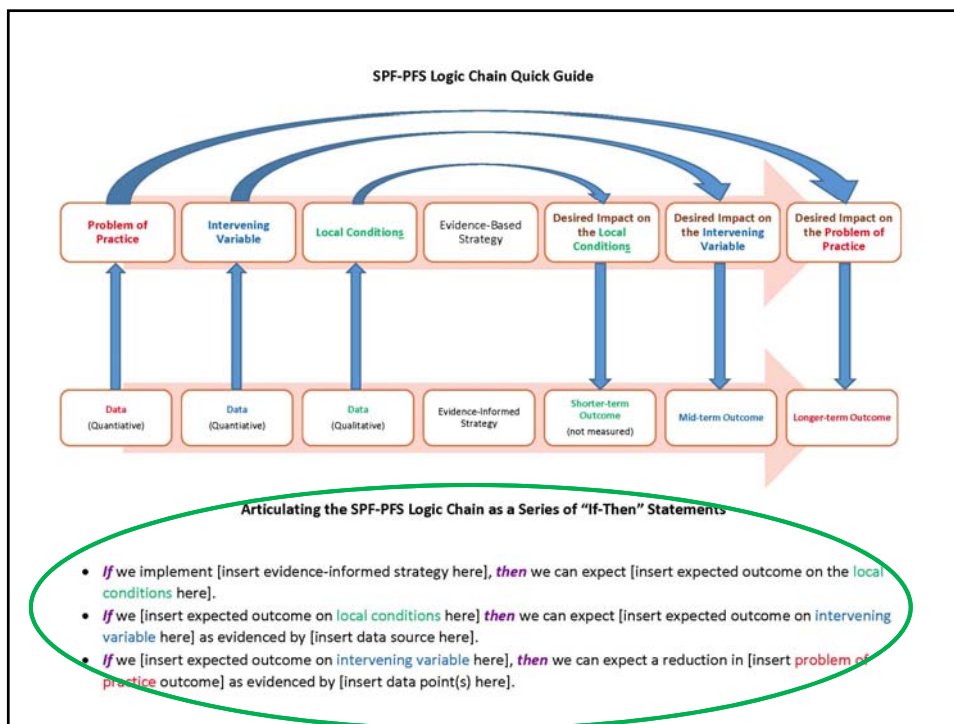
Insert SPF-PFS Coalition Name Here
SPF-PFS Strategic Plan Map: Insert County Here
Population of Focus:
 Briefly describe the demographics of the population of focus for this strategic plan.

Statement of the Community's Readiness to Address the Problem of Practice:
 Write 3-5 sentences here.

Theory of Community Change:
 Insert "If-Then Propositions" here.
 This box will summarize your theory of change and your outcomes in words.

Community Logic Model - Theory of Change			Theory of Action			Demonstrable Outcomes		
Problem of Practice	Intervening Variable	Local Conditions	Evidence-Based Strategy(ies)	Demonstrating Capacity	Time Line	Expected Outcomes for Local Conditions (Shorter-term Outcomes)	Outcome for the Intervening Variable (Mid-term Outcome)	Problem of Practice Outcome (Longer-term Outcome)
Description of Problem of Practice (in Words) Data to Support the Problem of Practice: Please include the source of the data and the year(s) the data was collected.	Description of Intervening Variable (in Words) The intervening variable must be directly related to the problem of practice. Data to Support the Intervening Variable: Please include the source of the data and the year(s) the data was collected.	Description of Local Conditions (in Words) The local conditions must be already related to the intervening variable. Data to Support the Local Conditions: Note: This will be qualitative data from your community's listening session. Please include the source of the data and the year(s) the data was collected.	Strategy #1: Briefly describe the evidence-informed strategy the coalition has selected to address the local conditions. There should be 1:1 correspondence between the local conditions and the strategy. CAP Tag: Insert the type of strategy selected (Education, Environmental, Alternative Activity, Community-based Process, Information Dissemination)	Budget for Strategy #1: \$ SPF-PFS Budget: \$ Percentage of Total SPF-PFS Budget: % In-kind: \$ Total Budget: \$	Timeline for Strategy #1: What are the key things that have to happen to get the strategy complete? What is your timeline? DATE: Activity DATE: Activity etc.	This column should have 1:1 correspondence with the local conditions. Note: Conditions are not expected to measure the local conditions. However, it is important to show how the selected strategy will influence the local conditions which will then in turn impact the intervening variable.	This column should have 1:1 correspondence with the Problem of Practice. Reduce Underage Drinking Among Persons Aged 12-20 Year Reduce Rx Drug Misuse/Abuse Among Persons Aged 12-25 + as measured by _____ The intervening variable should directly impact the problem of practice.	This column should focus on the outcome expected for the Problem of Practice. Reduce Underage Drinking Among Persons Aged 12-20 Year Reduce Rx Drug Misuse/Abuse Among Persons Aged 12-25 + as measured by _____
Please be concise. You may not use more than one 11x17 page!								

Suggested Citation:
 Raffle, H. (2018, April). *Introduction to the SPF-PFS Strategic Plan Map*. Athens, OH: Voinovich School of Leadership and Public Affairs at Ohio University.



Insert SPF-PFS Coalition Name Here
SPF-PFS Strategic Plan Map: Insert County Here
Population of Focus:

Briefly describe the demographics of the population of focus for this strategic plan.

Statement of the Community's Readiness to Address the Problem of Practice:

Theory of Community Change:
Insert "If-Then-Practitioner" text.

This box will describe your theory of change and your outcomes to work.

Community Logic Model - Theory of Change			Theory of Action			Measurable Outcomes		
Problem of Practice	Intervening Variable (There may be ONLY one intervening variable per page)	Local Conditions (There may be MORE than one local condition listed)	Evidence-Based Strategy(ies)	Demonstrating Capacity Inputs: Human / Material Resources	Time Line	Expected Outcomes for the Local Conditions (Shorter term Outcomes)	Outcomes for the Intervening Variable (Mid term Outcomes)	Problem of Practice Outcome (Longer term Outcome)
Description of Problem of Practice (in Words) Please include the source of the data and the year(s) the data was collected.	Description of Intervening Variable (in Words) The intervening variable must be directly related to the problem of practice. Please include the source of the data and the year(s) the data was collected.	Description of Local Conditions (in Words) The local conditions must be directly related to the intervening variable. Please include the source of the data and the year(s) the data was collected.	Strategy #1: Briefly describe the evidence-informed strategy the coalition has selected to address the local conditions. There should be 1:1 correspondence between the local conditions and the strategy. CAP Type: Insert the type of strategy selected (Education, Environmental, Alternative Activity, Community-based Process, Information Dissemination) Strategy #2: Briefly describe the evidence-informed strategy the coalition has selected to address the local conditions. There should be 1:1 correspondence between the local conditions and the strategy. CAP Type: Insert the type of strategy selected (Education, Environmental, Alternative Activity, Community-based Process, Information Dissemination)	Budget for Strategy #1: SPF-PFS Budget: \$ Percentage of Total SPF-PFS Budget: XX% In-kind: \$ Total Budget: \$	Timeline for Strategy #1: What are the key things that have to happen to get the strategy complete? What is your timeline? DATE: Activity DATE: Activity etc.	This column should have 1:1 correspondence with the local conditions. Note: Conditions are not expected to measure the local conditions. However, it is important to show how the selected strategy will influence the local conditions, which will then in turn impact the intervening variable.	This column should have 1:1 correspondence with the intervening variable + as measured by _____. The intervening variable should directly impact the problem of practice.	This column should focus on the outcome expected for the Problem of Practice: Reduce Underage Drinking Among Persons Aged 12-20 + Reduce Rx Drug Misuse/Abuse Among Persons Aged 12-25 + as measured by _____. Please be concise. You may not use more than one 11x17 page!

Suggested Citation:

Raffle, H. (2018, April). *Introduction to the SPF-PFS Strategic Plan Map*. Athens, OH: Voinovich School of Leadership and Public Affairs at Ohio University.

Insert SPF-PFS Coalition Name Here
SPF-PFS Strategic Plan Map: Insert County Here
Population of Focus:

Briefly describe the demographics of the population of focus for this strategic plan.

Statement of the Community's Readiness to Address the Problem of Practice:

Write 3-5 sentences here.

Theory of Community Change:
Insert "I, Then Propositions" here.


This box will summarize your theory of change and your outcomes in words.

Community Logic Model – Theory of Change		Theory of Action			Measurable Outcomes			
Problem of Practice	Intervening Variable <small>(There may be ONLY one intervening variable per map.)</small>	Local Conditions <small>(There may be MORE than one local condition listed.)</small>	Evidence-Based Strategy(ies)	Demonstrating Capacity <small>(Include Human / Material Resources)</small>	Time Line	Expected Outcomes for the Local Conditions <small>(Shorter-term Outcomes)</small>	Outcome for the Intervening Variable <small>(Mid-term Outcome)</small>	Problem of Practice Outcome <small>(Longer-term Outcome)</small>
Description of Problem of Practice (in Words) <small>The intervening variable must be directly related to the problem of practice.</small>	Description of Intervening Variable (in Words) <small>The intervening variable must be directly related to the problem of practice.</small>	Description of Local Conditions (in Words) <small>The local condition must be directly related to the intervening variable.</small>	Strategy #1 Briefly describe the evidence-informed strategy the coalition has selected to address the local conditions. There should be 1:1 correspondence between the local conditions and the strategy. <small>CSAP Type: Insert the type of strategy selected (Education, Environmental, Alternative Activity, Community-based, Information, Discretionary)</small>	Budget for Strategy #1: \$_____ SPF-PFS Budget %: _____ Budget: 10% Total Budget: \$_____ Is Kind: 1	Timeline for Strategy #1: <small>What are the key things that have to happen to get the strategy completed? What is your timeline?</small> DATE: Activity	This column should have 1:1 correspondence with the local conditions. <small>Note: Coalitions are not expected to measure the local conditions. However, it is important to show how the selected strategy will influence the local conditions which will then in turn impact the intervening variable.</small>	This column should have 1:1 correspondence with the intervening variable + as measured by _____ <small>The intervening variable should directly measure the problem of practice.</small>	This column should focus on the outcome expected for the Problem of Practice: Reduce Underage Drinking Among Persons Aged 12-20 for* <small>Reduce Rx Drug Misuse/Abuse Among Persons Aged 12-20 + as measured by _____</small>
Data to Support the Problem of Practice:	Data to Support the Intervening Variable:	Data to Support the Local Conditions:	Strategy #2 Briefly describe the evidence-informed strategy the coalition has selected to address the local conditions. There should be 1:1 correspondence between the local conditions and the strategy. <small>CSAP Type: Insert the type of strategy selected (Education, Environmental, Alternative Activity, Community-based, Information, Discretionary)</small>	Budget for Strategy #2: \$_____ SPF-PFS Budget %: _____ Budget: 10% Total Budget: \$_____ Is Kind: 2	Timeline for Strategy #2: <small>What are the key things that have to happen to get the strategy completed? What is your timeline?</small> DATE: Activity			

Please be concise. You may not use more than one 11x17 page!

Step 4: Transfer the Information onto Ohio's SPF-PFS Strategic Plan Map

- Your coalition will submit one Strategic Plan Map for **each** intervening variable addressed.
- Each map allows space for two strategies to address a single intervening variable.
- Forms are available on the SPF-PFS Website.
- Coalitions will submit Strategic Plan Map to the EBP with the appropriate Strategy Proposal Forms.


STRATEGIC PREVENTION FRAMEWORK PARTNERSHIPS FOR SUCCESS (SPF-PFS)

Suggested Citation:
 Raffle, H. (2018, April). *Introduction to the SPF-PFS Strategic Plan Map*. Athens, OH: Voinovich School of Leadership and Public Affairs at Ohio University.

Resources: Logic Model and Ohio's SPM

- Review the Strategic Plan Maps and Strategy Proposal Forms from the SPF SIG (forms have been revised):
 - <http://mha.ohio.gov/Default.aspx?tabid=674>
 - Ohio SPF 13 Counties
 - Select A County
 - See “Logic Model” and “Strategic Plan” Tabs
- SPF-PFS Website (forms and video)
 - <http://pfs.ohio.gov/>
 - SPF Phases
 - Planning
 - 2. Strategic Planning
- OCAM Coach & OSET Evaluator



STRATEGIC PREVENTION FRAMEWORK PARTNERSHIPS FOR SUCCESS (SPF-PFS)

Due Dates: Ohio's SPM

- Submit *draft* SPMs (not including community-based process) to OSET: 5/25, 5:00pm
- Peer sharing of SPMs (not including community-based process) at June F2F Learning Community 6/6
- Final SPMs (not including community-based process) due to EBP Workgroup for review 6/15, 5:00pm
- EBP Review: 6/22
- All plans approved (hopefully!) by 6/30



STRATEGIC PREVENTION FRAMEWORK PARTNERSHIPS FOR SUCCESS (SPF-PFS)

Suggested Citation:

Raffle, H. (2018, April). *Introduction to the SPF-PFS Strategic Plan Map*. Athens, OH: Voinovich School of Leadership and Public Affairs at Ohio University.

Thank you!

<http://pfs.ohio.gov/>



STRATEGIC PREVENTION FRAMEWORK PARTNERSHIPS FOR SUCCESS (SPF-PFS)

Suggested Citation:

Raffle, H. (2018, April). *Introduction to the SPF-PFS Strategic Plan Map*. Athens, OH: Voinovich School of Leadership and Public Affairs at Ohio University.